

# **SOUTH CAROLINA COMMISSION ON DISABILITIES AND SPECIAL NEEDS**

## **MINUTES**

August 17, 2023

The South Carolina Commission on Disabilities and Special Needs met on Thursday, August 17, 2023, at 10:00 a.m., at the Department of Disabilities and Special Needs Central Office, 3440 Harden Street Extension, Columbia, South Carolina.

The following were in attendance:

### **COMMISSION**

#### **Present In-Person**

Eddie Miller - Chairman

Michelle Woodhead – Vice Chairman

Gary Kocher, MD - Secretary

Barry Malphrus

#### **Microsoft Teams**

David Thomas

### **DDSN Administrative Staff**

Quincy Swygert, Chief Financial Officer; Lori Manos, Associate State Director of Policy; Courtney Crosby, Internal Audit Director; Harley Davis, Ph.D., Chief Administrative Officer; Carolyn Benzon, Deputy General Counsel; Greg Meetze, Chief Information Officer; Ann Dalton, Director of Quality Management; PJ Perea, Communications Division; Preston Southern and Jana Brown, Information Technology Division; and Christie Linguard, Executive Assistant.

### **Notice of Meeting Statement**

Chairman Miller called the meeting to order, and Secretary Kocher read a statement of announcement about the meeting that was distributed to the appropriate media, interested persons, and posted at the Central Office and on the website in accordance with the Freedom of Information Act.

### **Welcome**

Chairman Miller welcomed everyone to the meeting.

### **Adoption of the Agenda**

On a motion by Commissioner Kocher, seconded by Commissioner Malphrus, the meeting agenda was unanimously approved as written by the Commission. (Attachment A)

### **Invocation**

Commissioner Thomas gave the invocation.

### **Approval of Commission Meeting Minutes**

Commissioner Malphrus asked if the last page of the minutes could be amended to add the word “not” to his reasoning for voting no to appoint Constance Holloway as the State Director. The Commission agreed to table the meeting minutes for the administrative coordinator to relisten to the video and adjust the minutes accordingly. (Attachment B)

### **Commissions' Updates**

Commissioner Malphrus spoke about an article he read regarding overcoming difficulties. If anyone would like to read it, they were asked to contact Commissioner Malphrus personally. Commissioner Malphrus announced that Stephanie Rawlinson has resigned as a commissioner. He went on to read a couple of sentences from Ms. Rawlinson's resignation letter. Additionally, he commended and thanked Ms. Stephanie Rawlinson for her services on this Commission. He went on to state that he feels there are competing interests between those we serve and the providers that provide those services; he noted that he will always side with those that we serve.

Commissioner Kocher spoke about his attendance at the Brain Injury Leadership Council Conference last month. He also got an opportunity to meet with Karen Crider of Palmetto ABLE of South Carolina.

Commissioner Thomas will attend a senior event in Pickens County. He gave his phone number in the event a consumer needs to speak to him.

Commissioner Woodhead attended Clemson University's Wheelchair Tennis Tournament this year. Participants doubled from 25 last year to 50 this year. She also attended the Changing Life Foundation Meet and Greet and got a chance to meet the twelve scholarship recipients.

Commissioner Miller noted that he received Ms. Stephanie Rawlinson's letter of resignation dated July 25, 2023; the effective date of her resignation is August 4, 2023. He thanked her for her contributions to the Commission and is grateful for her leadership as Chairman. Additionally, Commissioner Miller announced that Senator John L. Scott passed away this past Sunday. He was a member of the Senate Medical Affairs Committee. Condolences were sent to the entire Scott family.

### **Public Input**

Ms. Wendy Beers spoke during public input.

Commissioner Thomas spoke briefly about the waiting list at the Agency. He feels that the vast waiting list is a universal systemic issue and would like more conversations with the staff regarding it. Chairman Miller will ask Interim State Director Holloway and staff to discuss this issue further with Commissioner Thomas.

### **Programs and Services**

Ms. Rachal Hatton-Moore, Project Coordinator with SC First Steps to speak on the First 5 SC – Transforming Access to Public Systems. (Attachment C)

### **Commission Committee Business**

#### A. Committee Chair Assignments

Chairman Miller announced the new Commission Committee Chair Assignments for this fiscal year, which was effective July 26, 2023, are as follows:

#### Finance and Audit Committee

Michelle Woodhead, Chair  
Gary Kocher, MD  
Eddie Miller

#### Legislative Committee

David Thomas, Chair  
Gary Kocher, MD  
Eddie Miller

#### Policy Committee

Gary Kocher, MD, Chair  
Barry Malphrus  
David Thomas

#### B. Finance and Audit Committee

Commissioner Woodhead noted that this was a very productive month for the Agency. She asked Mr. Quincy Swygert to present both items on the agenda.

### Fiscal Year 2024 Spending Plan

Mr. Swygert noted that this information looks a little different from last year primarily due to the transition to Fee-for-Service. There were no questions on the Plan presented; therefore, Commissioner Woodhead made a motion to adopt the FY24 Spending Plan as presented. This motion was seconded by Commissioner Kocher and unanimously approved by the Commission. (Attachment D)

### Fiscal Year 2024 Contracts

Mr. Swygert presented the Fiscal Year 2024 Contracts. Commissioner Malphrus asked if Mr. Swygert could include interagency contracts in a future Commission meeting. Mr. Swygert stated that he can include the administrative contracts next month to the Commission; however, most of those contracts are not due for approval because they cross fiscal years. He will also include the expenditures for each contract. Commissioner Woodhead made a motion to approve the contracts presented today for fiscal year 2024; the motion was seconded by Commissioner Malphrus and unanimously approved by the Commission. (Attachment E)

## C. Policy Committee

Commissioner Kocher discussed the following directive for approval:

413-12-DD: Employee Personal Property Damage Reimbursement – this directive was put out for public comment and received no comments. Therefore, Committee Chairman Kocher made a motion to approve this directive; the motion was seconded by Commissioner Woodhead and unanimously approved by the full Commission. (Attachment F)

As a Committee Update, the next Policy Committee will take place on Tuesday, September 12, 2023, at 1:00 PM. Committee Chairman Kocher noted that directive 800-07-CP will be reviewed during this meeting and right now, it is the only item on the agenda.

## **Old Business**

### A. Quarterly Incident Management Report

Ms. Dalton briefly spoke on the five-year incident trend data for Community-Based Services (including Residential and Day Service Settings) and Regional Centers through June 30, 2023. Ms. Dalton also informed the Commission three new staff members will join the Quality Management team. (Attachment G).

B. Update on EdMetric, LLC & Sage Squirrel Consulting, LLC

Dr. Davis noted that some of our Agency's staff members and the Department of Health and Human Services staff members met with EdMetric on July 25, 2023, to continue finalizing the pilot project plan. Logistics are still being worked on, but the plan is to have the pilot project plan up and running soon. She noted that the provider participation is very important and critical to this pilot since our focus is on those that are being supported and served residentially.

Sage Squirrel Consulting, LLC (SSC) has drafted a strategic plan which is based on data collection efforts within our Agency and among those we support, to include their families and guardian providers. Currently, SSC is collecting data through public comment from other state agencies and partner organizations. Dr. Davis petitioned those listening to please provide feedback on the drafted plan by August 23<sup>rd</sup>. Lastly, SSC will be visiting South Carolina in October to provide governance training for our Commission and executive team members.

**New Business**

Financial Update

Mr. Swygert presented the FY23 Spending Plan vs Actual as of July 31, 2023. The agency is currently 3.41% over budget. Commissioner Woodhead made a motion to approve the Financial Update, seconded by Commissioner Thomas and unanimously approved by the Commission. (Attachment H)

**Director's Update**

In the absence of the Interim State Director, Dr. Harley Davis gave the Director's Report for the Agency. (Attachment I)

Chairman Miller thanked the executive staff and all staff members of the Agency. He added that everyone is doing a great job.


**Next Regular Meeting**

September 21, 2023, at 10:00 AM

**Adjournment**

On a motion by Commissioner Thomas, seconded by Commissioner Woodhead and approved by the full Commission, the meeting was adjourned at 11:04 A.M.

Submitted by:



Christie D. Linguard  
Executive Assistant

Approved by:



Commissioner Gary Koehler, M.D.  
Secretary

**SOUTH CAROLINA COMMISSION ON DISABILITIES AND SPECIAL NEEDS**

**A G E N D A**

**South Carolina Department of Disabilities and Special Needs  
3440 Harden Street Extension  
Conference Room 251 (TEAMS)  
Columbia, South Carolina**

**August 17, 2023**

**10:00 A.M.**

1. Call to Order *Chairman Ed Miller*
2. Notice of Meeting Statement *Commissioner Gary Kocher*
3. Welcome
4. Adoption of Agenda
5. Invocation *Commissioner David Thomas*
6. Approval of the July 20, 2023 Commission Meeting Minutes
7. Commissioners' Update *Commissioners*
8. Public Input
9. Programs and Services  
First 5 SC (SC First Steps) *Rachal Hatton-Moore  
Project Coordinator*
10. Commission Committee Business
  - A. Committee Chair Assignments *Chairman Ed Miller*
  - B. Finance Committee *Committee Chair Michelle Woodhead*
    1. FY24 Spending Plan
    2. FY24 Contracts
  - C. Policy Committee *Committee Chair Gary Kocher, MD*
    1. 413-12-DD: Employee Personal Property Damage Reimbursement
    2. Committee Update
11. Old Business:
  - A. Quarterly Incident Management Report *Ms. Ann Dalton*
  - B. Update on EdMetric, LLC & Sage Squirrel Consulting, LLC *Harley Davis, PhD*

12. New Business:

Financial Update

*Mr. Quincy Swygert*

13. Director's Update

*Ms. Constance Holloway*

14. Next Regular Meeting – September 21, 2023

15. Adjournment



## **SOUTH CAROLINA COMMISSION ON DISABILITIES AND SPECIAL NEEDS**

### **MINUTES**

July 20, 2023

The South Carolina Commission on Disabilities and Special Needs met on Thursday, July 20, 2023, at 10:00 a.m., at the Department of Disabilities and Special Needs Central Office, 3440 Harden Street Extension, Columbia, South Carolina.

The following were in attendance:

#### **COMMISSION**

##### **Present In-Person**

Eddie Miller - Chairman

Michelle Woodhead – Vice Chairman

Gary Kocher, MD - Secretary

Barry Malphrus

David Thomas

#### **DDSN Administrative Staff**

Constance Holloway, Interim State Director/General Counsel; Janet Priest, Associate State Director of Operations; Harley Davis, Ph.D., Chief Administrative Officer; Quincy Swygert, Chief Financial Officer; Courtney Crosby, Internal Audit Director; Lori Manos, Associate State Director of Policy; Carolyn Benzon, Deputy General Counsel; Greg Meetze, Chief Information Officer; Preston Southern and Jana Brown, Information Technology Division; and Christie Linguard, Executive Assistant.

#### **Notice of Meeting Statement**

Chairman Miller called the meeting to order, and Secretary Kocher read a statement of announcement about the meeting that was distributed to the appropriate media, interested persons, and posted at the Central Office and on the website in accordance with the Freedom of Information Act.

#### **Welcome**

Chairman Miller welcomed everyone to the meeting. Vice Chairman Woodhead welcomed her parents, who are visiting from Tennessee.

#### **Adoption of the Agenda**

On a motion by Commissioner Kocher, seconded by Commissioner Thomas, the meeting agenda was unanimously approved as written by the Commission. (Attachment A)

### **Invocation**

Chairman Miller gave the invocation.

### **Approval of Commission Meeting Minutes**

Commissioner Thomas made a motion to approve the minutes from the June 15, 2023, regular Commission meeting; this motion was seconded by Commissioner Woodhead and unanimously approved by the Commission. (Attachment B)

### **Public Input**

Michelle Shaffer of MaxAbilities, Heather Waddell of Tri-Development Center of Aiken County, Inc. and Amy Davenport all spoke to the Commission. Interim Director Holloway asked Ms. Davenport to email her concerns to the agency and someone will respond to her.

For the record, Interim Director Constance Holloway noted that Ms. Patricia Harrison wanted to speak during Public Input; however, do to pending litigation between Ms. Harrison and the Agency, she was not allowed to speak.

### **Policy Committee**

Commissioner Malphrus noted that the Policy Committee met on July 18, 2023, and gave an update on a couple policies to include the following:

100-31-DD: Provider Qualifications and Contracting – this is a new directive to establish a process by which the Agency will contract with providers to deliver necessary services and support to individuals who are eligible for the agency’s services, to include Medicaid waver services. This directive has been out for public comment and is being presented to the Commission for approval. Discussion was held. Coming out of the Committee as a motion and second, the full Commission approved the directive as written. (Attachment C)

413-11-DD: COVID-19 Vaccine Requirements and Exemptions for Staff in Intermediate Care Facilities for Individuals with Intellectual Disabilities (ICFs/IID) – the Committee is recommending this directive be declared obsolete as it is no longer required and can be addressed internally. Coming out of the Committee as a motion and second, the full Commission approved to make this directive obsolete. (Attachment D)

## **Old Business**

### A. Ongoing Projects List Update

Commissioner Thomas noted that there are some issues with some of the questions on this document; therefore, he is withdrawing his motion from the last Commission meeting and delaying staff presentation of this document for at least six months. Commissioner Malphrus would like the Commission to consider making a priority list instead of presenting all the answers at one time. Commissioner Thomas' motion to delay for six months was seconded by Commissioner Kocher and unanimously approved by the Commission. Not part of the motion, Commissioner Thomas asked if agreeable with the staff, the list could be prioritized as Commissioner Malphrus stated and presented even earlier than six months, if possible. (Attachment D).

### B. Head and Spinal Cord Injury (HASCI) Drop-In Centers Update

Ms. Manos reminded everyone that at the beginning of the year, the Commission voted to continue funding the Centers at the previously approved amount of \$28,000 per quarter, per Center (\$112,000/quarter). Approval of the funding was granted for one year, with an update to the Commission provided six months from the initial approval date. Since January, a new HASCI Waiver service, Independent Living Skills, has been added. This addition is expected to assist providers to attract additional participants and generate additional funding for the Centers. Lastly, Ms. Manos stated that because of the population and the fact that a Center does not have a ton of people since there are not a ton of people in the area, the Centers may require an extension of state funding if they are continued in January. Commissioner Thomas referenced what he believed to be a Legislative Audit Council finding regarding these HASCI Drop-In Centers. Staff will work with Commissioner Thomas to research the finding to make sure we are addressing all possibilities for those with spinal cord injuries. Commissioner Malphrus has requested another three-month update. (Attachment E)

## **New Business**

### A. Case Management Services Solicitation

Ms. Manos informed the Commission that the Agency is experiencing access problems in case management, particularly around consumers who are in extreme crisis (i.e., consumers being dropped off at the hospital and being left there; people that have no place to live, etc.). This Solicitation asks for current case management providers who are in good standing and who have a high score to submit a proposal to carry a caseload of no more

than 15 people per region. Commissioner Thomas spoke about some of the consumer issues he has been faced with to include but not be limited to gaps in communication, cracks in the system, etc. Ms. Manos responded by stating that the Agency is well on its way to helping solve a lot of systemic issues through the Strategic Planning Initiative. The Agency is working hard to help with improving the service delivery for our consumers. Commissioner Thomas made a motion to approve the Solicitation for Intensive Care Coordination Services as presented; this motion was seconded by Commissioner Woodhead and unanimously approved by the Commission. (Attachment F)

B. Financial Update (Preliminary Year-End Closing)

Mr. Swygert presented the FY23 Spending Plan vs Actual as of June 30, 2023. To date, the Agency has expended \$993M, 96.05% of our approved spending plan of \$939.1M. The agency is currently 5.77% over budget. Commissioner Thomas stated that he would like the Internal Auditor on the Commission agenda every month or every other month. Commissioner Thomas made a motion to approve the Financial Update, seconded by Commissioner Woodhead. For clarity, the agency serves approximately 21,500 consumers with a total number of eligible consumers of approximately 40,000. The motion was unanimously approved by the Commission. (Attachment G)

**Director's Update**

Interim Director Holloway gave an update on the Agency. (Attachment H)

Chairman Miller acknowledged that Commissioner Rawlinson is not in attendance this morning due to her attending a funeral.

**Executive Session**

Chairman Miller announced that the Commission will go into Executive Session for the purpose of discussing a personnel matter regarding the hiring of a state director. At 11:05 AM, on a motion by Commissioner Thomas, seconded by Commissioner Malphrus, the commission voted unanimously to enter executive session.

**Rise Out of Executive Session**

Upon rising out of executive session at 12:14 PM, Chairman Miller announced that no motions were made, and no votes taken during executive session.

**Action on Item(s) Discussed in Executive Session, if needed**

Commissioner Thomas made a motion to appoint Constance Holloway as State Director of the SC Department of Disabilities and Special Needs. The motion was seconded by Commissioner Kocher. Commissioner Malphrus asked if each vote can be taken individually, as referenced in Robert's Rules of Order [the Freedom of Information Act]. Commissioner Malphrus' vote is No because he does not feel the Commission did its due diligence by allowing others to apply; Commissioner Thomas voted aye; Commissioner Kocher voted aye; Commissioner Woodhead voted aye; and Commissioner Miller voted aye. Four (4) ayes and one (1) no vote; the ayes have it. Constance Holloway is the new State Director of DDSN. Commissioner Thomas congratulated Ms. Holloway and she accepted the appointment.

Commissioner Kocher announced that the SC Brain Injury Leadership Council is having an all-day meeting on Friday, July 28<sup>th</sup>.

Chairman Miller stated that it is a pleasure to have Ms. Holloway serve as the State Director of the Agency.

**Next Regular Meeting**

August 17, 2023, at 10:00 AM

**Adjournment**

The meeting was adjourned at 12:17 P.M.

Submitted by:

Approved by:

---

Christie D. Linguard  
Executive Assistant

---

Commissioner Gary Kocher, M.D.  
Secretary



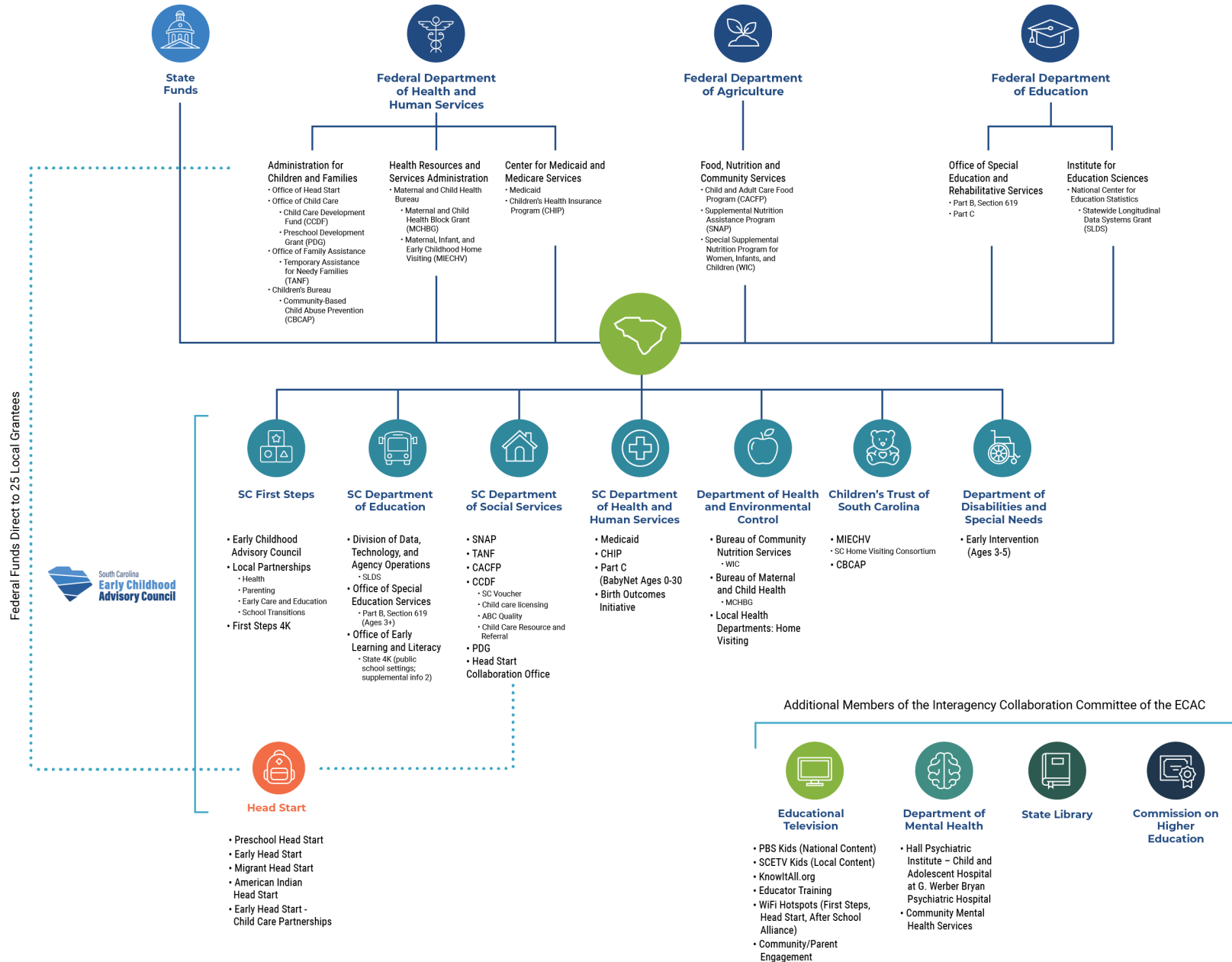
# Transforming Access to Public Systems

[first5sc.org](http://first5sc.org)



Project supported by the Preschool Development Renewal Grant Birth through Five Initiative (PDG 5), Grant Number 90TP0080-02-01, from the Office of Child Care, Administration for Children and Families, U.S. Department of Health and Human Services.

# Flow of state & federal funds into South Carolina's early childhood system



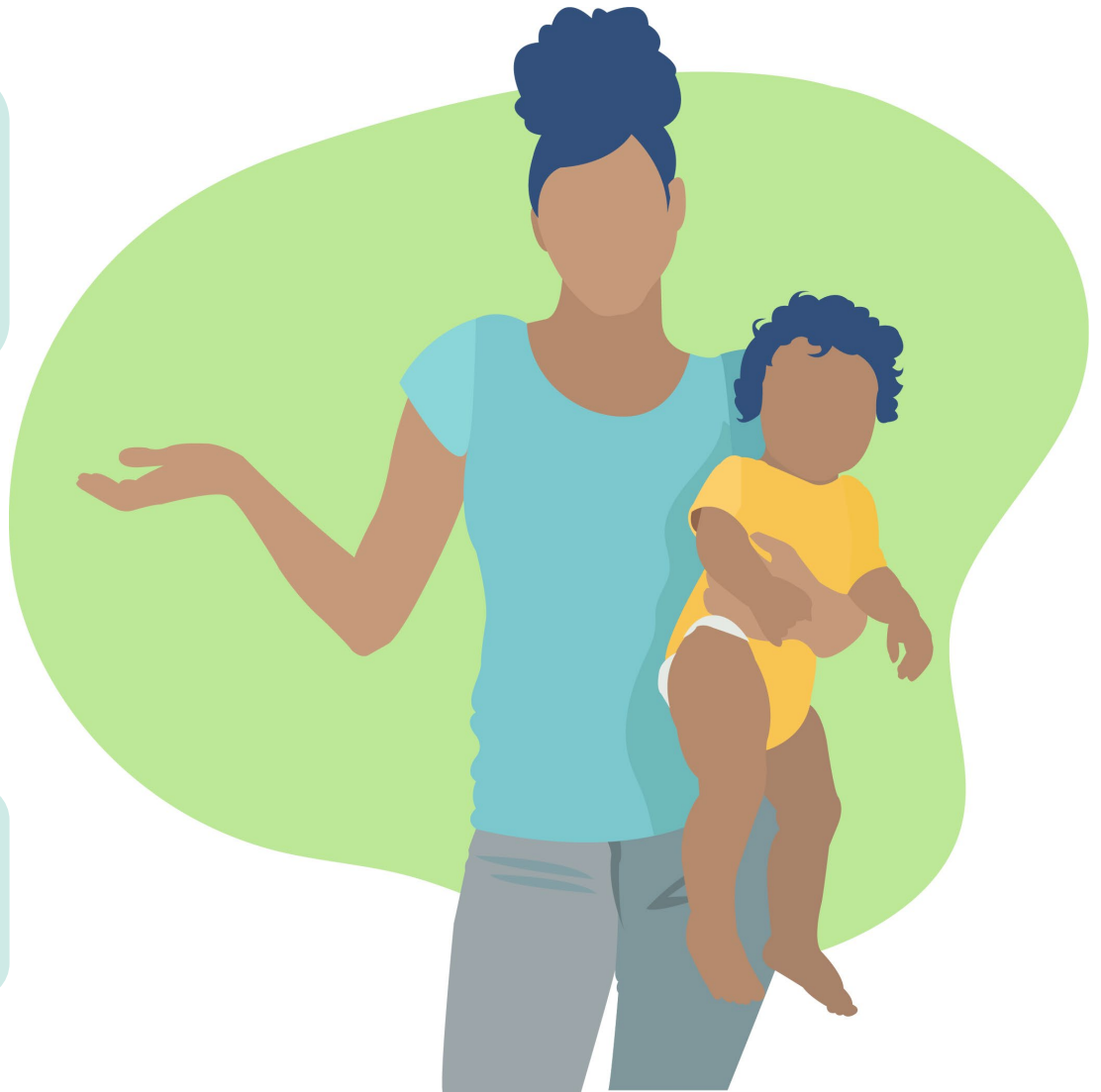
# We listened

to 2500+ parents and caregivers in every county of the state  
and members of the SC Family Voice Council

“As a parent you  
have to fill out  
[applications]  
several times, and it  
takes a lot of time.”

“Finding  
support can  
be difficult.”

“It takes forever to  
wait at offices in-  
person.”





# Our vision

All children will be successful



# Check your eligibility for more than 40 free programs and apply online.



Child Care &  
Early Education



Special Needs &  
Early Intervention



Parenting &  
Family Support



Health & Safety



Food & Nutrition

[first5sc.org](https://first5sc.org)

# Get the support your child needs from birth through age five.

We connect families with South Carolina's public services for young children.



**Check your eligibility for over 40 services.**

Answer a few questions and we'll show you what you qualify for. You can now apply online.



# Connect To Services



## Contact Info

Please enter your contact information.

We'll only use this information to contact you regarding enrolling in publicly funded programs. [View privacy policy](#)

How did you hear about First Five SC?

- Billboard
- Family/Friend
- Google Search
- Radio
- SC First Steps
- Sign/Poster
- Social Media
- Other

Yes, I consent to the collection and/or usage by SC First Steps or our partners of your personal information as referred to or otherwise stated in the [Privacy Policy](#) and [Terms of Use](#).

Next

## Connect To Services



### Child's Birthday

Please enter your child's birthday or your expected due date.

To determine eligibility for multiple children, complete this form and then you will have the opportunity to complete for another child.

Back

Next

## Connect To Services



### Address

Please enter your home address.

Eligibility in some programs is dependent on your home address.  
Please select address from the dropdown below to proceed.

100 Tarrar Springs Road, Lexington, SC, USA

Apartment Number

Back

Next



## Additional Criteria

Select all that may apply:

### Household Circumstances

- My child/family is experiencing homelessness.
- English is not the primary language spoken in our home.
- My child has a single parent/caregiver.
- My child has refugee status.
- When my child was born, their parent/caregiver did not have a high school diploma or GED.
- My child has a parent who is currently incarcerated or has been incarcerated within the last 12 months.
- My child has a parent/caregiver who is currently serving in the military away from home or has returned home from military duty within the last two years.
- I am a first time parent.

### Developmental Delays and Special Needs

- I am concerned about my child's development.
- My child has a documented disability or developmental delay.
- My child is experiencing behavioral issues.
- My child is blind or visually impaired.
- My child is deaf or hearing impaired.
- My child has been removed from child care or preschool for behavioral reasons.

## Are you already eligible or receiving government benefits?

- My child/family is enrolled or eligible for Temporary Assistance for Needy Families (TANF).
- My child is eligible for and receives Supplemental Security Income (SSI).
- My child is enrolled in or eligible for Medicaid.
- My child/family is eligible for or enrolled in Supplemental Nutrition Assistance Program (SNAP).
- My child is eligible for or receives free or reduced lunch.
- My child is eligible for IDEA Part B or Part C (early intervention, special education, and related services)
- I am pregnant or gave birth in the past year and am enrolled in or eligible for Medicaid.

## High Risk Pregnancy

- When my child was born, their parent/caregiver was under 20 years old.
- My child had low birth weight (under 5.5lbs) with serious medical complications.

## Adoption / Foster Care

- My child is in foster care (I am my child's foster parent).
- My child is adopted.

## Abuse / Neglect

- My child has been abused (this information is asked to help determine if your child may be eligible for some additional services and is optional to answer).
- My child has been neglected (this information is asked to help determine if your child may be eligible for some additional services and is optional to answer).

## Additional Optional Household Circumstances

- My child has experienced the death of a parent, caregiver, or sibling.
- My child's parent/caregiver has a substance abuse issue.
- My child's parent/caregiver has depression or another mental health condition.
- My child's parent/caregiver has an intellectual disability
- My child has been exposed to domestic violence within the family.
- My child has a parent/caregiver who was born in another country and entered the U.S. within the last five years.

Back

Next

# Connect To Services



## Income

Please enter your family's size including yourself, and your family's annual gross income (before taxes are taken out).

### Persons in Household

### Annual Income

Back

Next





Based on the information you entered, your child may be eligible for the following programs that you can [apply](#) for on First Five SC:

### SC Child Care Scholarships

Parents with income below 300% of the federal poverty level may be eligible for scholarships to pay for child care while they work or attend school.

[Learn More](#) ↗

### Parents as Teachers

Combining personal coaching and group sessions with other families, this program helps parents make the most of their important role in children's development and education.

[Learn More](#) ↗

### Dolly Parton Imagination Library

Any child up to age 5 can get a free book every month, to promote reading and build their own library.

[Learn More](#) ↗

### First Steps 4K+

Choose a free, full-day 4K program in a licensed child care center, charter school or private school. Plus, get child care scholarships for the whole family.

[Learn More](#) ↗

### WIC (Women, Infants, and Children Nutrition Program)

Free nutrition education, healthy foods, breastfeeding support and other services for pregnant and postpartum women and children under age 5.

[Learn More](#) ↗

### PASOs Connections for Child Development

Focused on supporting Latinx families, PASOs screens infants, toddlers, and children under age 5 for developmental delays.

[Learn More](#) ↗

### Countdown to 4K

Countdown to 4K supports strong school transitions by connecting children entering preschool, families, and teachers in a series of one-on-one visits during the summer.

[Learn More](#) ↗

**Apply Now on First Five SC**

Apply now for all the programs above in one place.



Based on the information you entered,  
your child may also be eligible for the following programs:

For information on how to apply for these programs click "learn more" under each program.

### Head Start

Care, activities, and lunch are provided free to children birth to age 5 who are from families with income at or below the poverty level.

[Learn More](#)

### SC Department of Disabilities and Special Needs Early Intervention

Find a range of in-home service to help families understand a child's delays and support a child's development.

[Learn More](#)

### SC Department of Education - Special Education Services

The Office of Special Education Services can help parents learn about public education access that is guaranteed to children with disabilities.

[Learn More](#)

### Medicaid

Adults and children in low income households may qualify for help paying medical bills.

[Learn More](#)

### Department of Mental Health Child Adolescent and Family Services

This is a starting place for families who need help with mental health, substance use, and behavioral health services, with the ability to connect parents and children to services in their community.

[Learn More](#)

### SNAP (Supplemental Nutrition Assistance Program)

Known to many as food stamps, SNAP provides low-income households with help to buy food.

[Learn More](#)

### Early Head Start

Free child care and parenting support are provided for eligible children age 3 and under, pregnant women, and their families.

[Learn More](#)

### SCDE Public School Pre-K CERDEP

Local school districts offer many options for public school 4K, and eligibility is based on income, Medicaid eligibility, developmental readiness, and other factors based on each district's PreK offerings.

[Learn More](#)

EMAIL ME MY RESULTS

COMPLETE FOR ANOTHER CHILD

START OVER

# Parenting & Family Support Providers

Your Address

- Parents as Teachers
- Nurturing Parenting
- Triple P – Positive Parenting Program
- HIPPY (Home Instruction for Parents of Preschool Youngsters)
- Family Literacy
- Talk To Me / LENA Home
- Strengthening Families
- ParentChild+
- Dolly Parton's Imagination Library
- Local Public Libraries
- Raising a Reader
- Motherread/Fatheread
- Incredible Years
- Early Steps to School Success

Show  entries

Search:

Name	Programs	Address	Phone Number	Distance
Lexington County Public Library System (Lexington Main)	Local Public Libraries	5440 Augusta Road, Lexington, SC 29072	(803) 532-9223	0.56
Irmo Branch Library	Local Public Libraries	6251 ST. ANDREWS ROAD, COLUMBIA, SC 29212	(803) 785-5387	6.36
South Congaree - Pine Ridge Branch Library	Local Public Libraries	200 Sunset Drive, West Columbia, SC 29172	(803) 345-5479	6.46
Coyce-West Columbia Branch Library	Local Public Libraries	1500 AUGUSTA ROAD, WEST COLUMBIA, SC 29169	(803) 785-3272	7.62
Richland Library St. Andrews	Local Public Libraries	2916 BROAD RIVER ROAD, COLUMBIA, SC	(803) 509-9255	7.91



# Common Application

## Create a First Five SC account

If you are just getting started, create a First Five SC account to apply for benefits.

With a First Five SC account you can:

- Save your application and finish it later.
- Keep track of programs you are eligible for.
- Securely share uploaded documents with multiple programs.

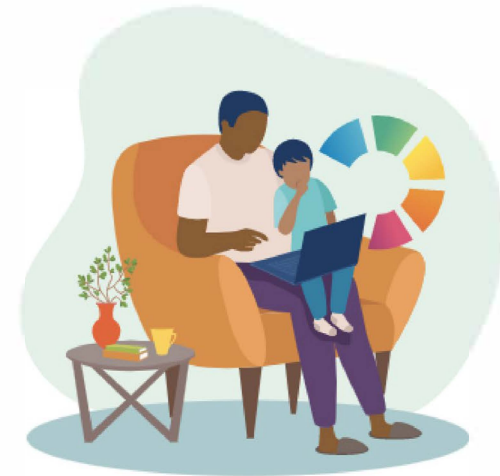
Create First Five SC Account

-OR-

Apply as a guest

## Continue your application

If you already have a First Five SC account, sign in to finish your application.



Sign In

First Five SC may show information about you or your dependents' possible eligibility to participate in program(s). The programs will make final decisions based on the information you provide. It is your responsibility to give the correct information to programs so they can determine eligibility. If there are programs you are interested in applying for that are not on the First Five SC application, please reach out to them directly.



# Common Application

## Basic Information

Let's start with some basic information that will be used on your application.

Pamela	Middle Name	Cooper	Suffix
pcooper@email.com		803-555-5555	
100 Tarrar Springs Road			
Address Line 2			
Lexington	South Carolina	29072	

Child 1: X

First Name	Middle Name	Last Name	Suffix
Male			

Birthday:

mm/dd/yyyy	
------------	--

[Add Another Child](#)

Yes, I consent to the collection and/or usage by SC First Steps or our partners of your personal information as referred to or otherwise stated in the Privacy Policy and Terms of Use.

[Next](#)

# Common Application

[EDIT BASIC INFORMATION](#) | [CREATE AN ACCOUNT](#)

## Start a New Application



### First Steps 4K+

Choose a free, full-day 4K program in a licensed child care center, charter school or private school. Plus, get child care scholarships for the whole family.



### SC Child Care Scholarships

Parents with income below 300% of the federal poverty level may be eligible for scholarships to pay for child care while they work or attend school.



### WIC (Women, Infants, and Children Nutrition Program)

Free nutrition education, healthy foods, breastfeeding support and other services for pregnant and postpartum women and children under age 5.



### Lexington County First Steps

Use this form to apply for the following programs:

#### Parents as Teachers

Combining personal coaching and group sessions with other families, this program helps parents make the most of their important role in children's development and education.

#### PASOs Connections for Child Development

Focused on supporting Latinx families, PASOs screens infants, toddlers, and children under age 5 for developmental delays.

#### Dolly Parton Imagination Library

Any child up to age 5 can get a free book every month, to promote reading and build their own library.

#### Countdown to 4K

Countdown to 4K supports strong school transitions by connecting children entering preschool, families, and teachers in a series of one on one visits during the summer.

### Looking for more programs?

Check eligibility for each child. Check again if you've moved.

[COMPLETE THE ELIGIBILITY SCREENER AGAIN](#)



“When our two-year-old daughter was diagnosed with an extremely rare syndrome that impacted her hearing, we didn’t know where to start. First Five SC connected us to the resources we needed and coached us through the application process. Having all that information in one centralized place was key to getting the right kind of help – fast.”

**Katie H.**  
South Carolina parent



**Rachal Hatton-Moore**  
Two-Generation Coordinator  
[rhatton@scfirststeps.org](mailto:rhatton@scfirststeps.org)

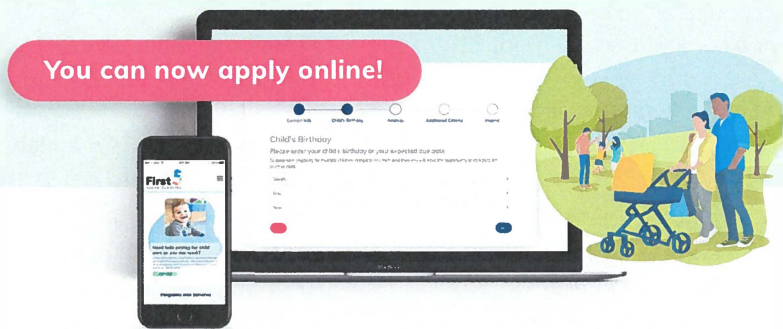
[first5sc.org](http://first5sc.org)







## Get the support your child needs from birth through age five.



Check your eligibility for over 40 public programs for young children and apply online.



Child Care & Early Education



Food & Nutrition



Health & Safety



Parenting & Family Support



Special Needs & Early Intervention

[first5sc.org](http://first5sc.org)



South Carolina  
Early Childhood  
Advisory Council



## Child Care & Early Education

- Child Care Scholarships – First Steps
- Countdown to Kindergarten – First Steps
- Countdown to 4K – First Steps
- Early Head Start
- Early Learning and Literacy – Dept. of Ed.
- First Steps 4K+
- Head Start
- Library Programs - Public Libraries, First Steps
- Public School 4K – Dept. of Ed.
- SC Child Care Resource & Referral
- SC Child Care Scholarships – DSS



## Health & Safety

- Child, Adolescent & Family Services – Dept. of Mental Health
- Child Passenger Safety Program – DHEC
- Child Protective Services – DSS
- Daniel's Law – DSS
- Health Services Coordination – First Steps
- Healthy Families America – Children's Trust
- HealthySteps – First Steps
- Lead Paint Information & Testing – DHEC
- Medicaid & Partners for Healthy Children – DHHS
- Nurse-Family Partnership – Children's Trust, DHEC, First Steps
- Perinatal HEP-B Case Management – DHEC
- Reach Out and Read – DHEC, First Steps, State Library
- Sickle Cell Program – DHEC
- SC First Sound Program – DHEC
- Vaccination Program – DHEC
- Water Safety & Testing – DHEC



## Special Needs & Early Intervention

- BabyNet – DHHS
- Children With Special Health Care Needs – DHEC
- Early Identification & Referral – First Steps
- Early Intervention – DDSN
- Help Me Grow Care Coordination – Help Me Grow SC
- PASOs Connections for Child Development – First Steps
- Special Education Services – Dept. of Ed.
- SC School for the Deaf and the Blind



## Food & Nutrition

- SNAP (Supplemental Nutrition Assistance Program) – DSS
- SNAP-Ed (Supplemental Nutrition Assistance Program Education) – DSS, DHEC
- Weekend Backpacks – First Steps
- WIC (Women, Infants & Children Nutrition Program) – DHEC



## Parenting & Family Support

- Child Support Services – DSS
- Dolly Parton's Imagination Library – First Steps
- Early Steps to School Success – First Steps
- Family Café – First Steps
- Family Literacy – Dept. of Ed., First Steps
- Fatherhood Initiatives – First Steps
- Hello Family – Children's Trust, First Steps
- HIPPIY – First Steps
- Incredible Years – First Steps
- Motherread/Fatherread – First Steps
- Nurturing Parenting – First Steps
- Parents as Teachers – First Steps, Children's Trust
- ParentChild+ – First Steps
- Raising A Reader – First Steps
- SC Educational Television (SCETV)
- SC State Library
- Strengthening Families – Children's Trust, First Steps
- Talk to Me / LENA Home – First Steps
- TANF (Temporary Assistance to Needy Families) – DSS
- Triple P – Children's Trust, First Steps



## Help Spread the Word

Use First Five SC to guide families in making informed decisions about the right programs for their children.

Request free materials to share with families in your community.

### What is First Five SC?

First Five SC is a website that connects families with publicly funded programs and services for young children. At [first5sc.org](http://first5sc.org), families can check their eligibility for more than 40 services and apply for multiple programs at once.

This one-stop-shop not only streamlines the application process for families, but also simplifies the referral process for providers. With First Five SC, you can quickly connect families to South Carolina's full spectrum of early childhood services, including child care assistance, preschool programs, healthcare, special needs services, food and nutrition assistance, and parenting support.

[first5sc.org](http://first5sc.org)



### Ideas for sharing:

- Display a poster in waiting areas and breakrooms.
- Hand out flyers at community events.
- Place brochures at the reception desk.
- Share with new staff during orientation.
- Follow us on Facebook and share posts with your network.



Connecting South Carolina families to programs and services for young children.

[first5sc.org](http://first5sc.org)



With First Five SC, you can easily guide families to the supports they want and need.



### Child Care & Early Education

Families can find free preschool programs, child care scholarships, and support for transitions into school.



### Health & Safety

From maternal and infant health to early childhood development, families can connect with care that meets their needs. The site features information about Medicaid, safe car seats, hearing screenings, and more.



### Special Needs & Early Intervention

Every child develops differently. First Five SC helps parents determine when they need extra help and access the right supports and resources.



### Food & Nutrition

Families can log on to First Five SC to get help accessing WIC, SNAP, and other food resources as well as information about nutrition and preparing healthy meals.



### Parenting & Family Support

First Five SC offers families resources and coaching support for things like caring for a new baby, parenting a toddler, and covering child-related costs through TANF and other supports.



## Ensuring All Children Reach Their Potential

Designed with input from parents and caregivers, [first5sc.org](http://first5sc.org) streamlines the delivery of publicly funded programs, making them more effective and efficient in meeting the needs of young children and their families.

Together, we can ensure all of South Carolina's children reach their full potential while putting families on a pathway to better health, prosperity, and overall well-being.

## FAQs

### How comprehensive is the resource?

First Five SC includes information about more 60 federally and state-funded programs across 10 state agencies, with the possibility of expanding to include additional publicly funded programs.

### How do families determine eligibility?

Families can use a simple, secure screening tool to check their eligibility for 40+ programs in minutes.

### How do families apply?

First Five SC now features a common application, where families can apply for multiple programs at once, using information they entered during the screening process.

### Is there a cost to use First Five SC?

No. As a public resource, First Five SC is completely free to use for both families and service providers.

### How do families access First Five SC?

Families can access First Five SC anytime, anywhere from a smartphone or computer. The website is available in both English and Spanish.

### What about privacy and security?

First Five SC adheres to strict data security measures. The collected data is used solely for the purpose of determining eligibility and streamlining the application process.

### Who manages First Five SC?

First Five SC is an initiative of the SC Early Childhood Advisory Council and managed by South Carolina First Steps, which coordinates with participating agencies to provide the most current information on available programs and services.

# FY24 SPENDING PLAN SUMMARY

REVENUE	
NON-RECURRING CASH SPEND	82,497
RECURRING REVENUE FORECAST	327,669,631
<b>TOTAL AVAILABLE FOR SPENDING PLAN</b>	<b>327,752,128</b>

EXPENDITURES	
STATE FUNDED SUPPORT SERVICES	30,501,000
COMMUNITY CONTRACT SERVICES	149,137,250
SALARY AND FRINGE (FTE & CONTRACT STAFF)	109,456,028
ADMINISTRATIVE CONTRACTS OVER \$40K - CENTRAL OFFICE/STATEWIDE	4,275,850
ADMINISTRATIVE CONTRACTS OVER \$40K- REGIONAL CENTER	2,526,000
ADMINISTRATIVE CONTRACTS UNDER \$40K	967,000
CENTRAL OFFICE OPERATING	853,000
REGIONAL CENTER/REGIONAL AUTISM OPERATING	13,161,000
CAPITAL PROJECT IMPROVEMENT PLAN (CPIP)	12,675,000
COMMUNITY HOUSING DEFERRED MAINTENANCE	1,700,000
NON-CAPITAL PROJECT IMPROVEMENT PLAN (NON-CPIP)	2,500,000
RESIDENTIAL (SOLICITATION RESPONSES)	2,416,918
<b>TOTAL PROJECTED EXPENDITURES</b>	<b>327,752,128</b>

## DDSN FY24 Contractual Agreements

Type of Contract	Vendor/Provider Name	Contract #	Initial FY24 Amount	Change to Initial FY24 Amount	Current FY24 Contract Amount	Description
<b>Consultant Agreements</b>						
Central Office	Dr. Jane M. Charles	N/A	Hourly	\$ -	\$ -	Interdisciplinary Technical Advisory Committee (ITAC) \$225.00/hour
Central Office	Erik Drasgow	N/A	\$ 28,800	\$ -	\$ 28,800	Interdisciplinary Technical Advisory Committee (ITAC) \$150.00/hour
Central Office	Gedeon & Associates, LLC (Kathi Laev)	N/A	\$ 28,800	\$ -	\$ 28,800	Interdisciplinary Technical Advisory Committee (ITAC) \$150.00/hour
Central Office	Palmetto Psychiatry Consultants, LLC	N/A	\$ 249,000	\$ -	\$ 249,000	Psychiatric Services \$255/hour (\$249,000 max)
Coastal	Charleston ENT Associates, LLC	N/A	\$ 5,000	\$ -	\$ 5,000	Audiological Services \$75/consumer (\$5,000 max for clinic)
Coastal	Coastal Medical Services	N/A	\$ 2,000	\$ -	\$ 2,000	Podiatry Clinic Services - \$50/person not covered by insurance (\$2,000 max)
Coastal	MUSC (Dr. McLeod Frampton Gwynette)	N/A	\$ 55,200	\$ -	\$ 55,200	Psychiatric Services - \$1,150/clinic (no more than 4 clinics/month, 10 per clinic & 3 hours duration) (\$55,200 max)
Coastal/Piedmont	Robert P. Turner dba Network Neurology Health, LLC	N/A	\$ 100,000	\$ -	\$ 100,000	Neurology Services - Coastal \$4,000/clinic every month (\$100,000 max) Piedmont \$3,500/clinic and \$250/travel every clinic month
Midlands	Altman Footcare, P.A.	N/A	\$ 9,600	\$ -	\$ 9,600	Podiatry Clinic Services - \$800/clinic (\$9,600 max)
Midlands	Delores Yvonne N. Means (Audiology Service)	N/A	\$ 5,000	\$ -	\$ 5,000	Audiological Services - \$1,000/visit (\$5,000 max)
Midlands	Mark Ayers, MD	N/A	\$ 200,000	\$ -	\$ 200,000	Physician Services - \$113/hour (\$200,000 max)
Midlands	Thomas W. Talbert, Jr. DMD	N/A	\$ 10,000	\$ -	\$ 10,000	Dental Services - \$100/hour (\$10,000 max)
Midlands	Trident Care (MobileX)	N/A	\$ 500	\$ -	\$ 500	Radiology and EKG Services - \$75/service per staff or consumer without insurance
Pee Dee/Saleeby	Pee Dee Speech & Hearing Center	N/A	\$ 2,000	\$ -	\$ 2,000	Audiological Evaluations - \$50/hour
Pee Dee/Saleeby	Hutto Rehab Services, LLC	N/A	\$ 105,600	\$ -	\$ 105,600	Speech Pathology Service \$80/hour / \$4,400/month max (\$105,600 max) Pee Dee/Saleeby
Pee Dee/Saleeby	Lowe's Rehabilitation Services, LLC	N/A	\$ 29,400	\$ -	\$ 29,400	Occupational Therapy Services - \$70/hour / \$1,400/month max (\$29,400 max)
Pee Dee	Morphis Pediatric Group	N/A	\$ 119,300	\$ -	\$ 119,300	Proactive Service Provision / Comprehensive Medical Care - \$9,740/month (\$119,330 annual max)
Pee Dee/Saleeby	R. Joseph Healy, MD PA	N/A	\$ 36,000	\$ -	\$ 36,000	Neurology Services - \$3,000/clinic (\$36,000 max) Pee Dee & \$3,000/clinic
Pee Dee/Saleeby	MUSC	N/A	\$ 55,200	\$ -	\$ 55,200	Psychiatric Services - \$1,150/clinic (no more than 4 clinics/month, 10 per clinic & 3 hours duration) (\$55,200 max)
Pee Dee	Trident Care (MobileX)	N/A	\$ 500	\$ -	\$ 500	Radiology and EKG Services - \$77.25/service per staff or consumer without insurance
Piedmont	Foot Clinic of South Carolina	N/A	\$ 3,700	\$ -	\$ 3,700	Foot Care Clinics - \$925/quarterly clinic (\$3,700 max)
Piedmont	NHC/OP K.P. dba NHC Rehabilitation	N/A	\$ 100,000	\$ -	\$ 100,000	Speech Pathology Services - \$66/on site; \$33/ 1/2 hour travel; \$0.50/mile
Piedmont	Pastor Lorenzo Whitfield	N/A	\$ 13,000	\$ -	\$ 13,000	Clergy services - \$500/service day (not to exceed 26 days; \$13,000 max)
Piedmont	Theritage Rehab Services, Inc.	N/A	\$ 150,000	\$ -	\$ 150,000	Physical Therapy Evaluation and Treatment - \$72/PT per hour; \$51.75/PTA per hour (\$150,000 max)
Piedmont	William A. Burn, III, DMD, MAGD	N/A	\$ 20,000	\$ -	\$ 20,000	Dental Services - \$175/hour
Piedmont	William S. Owens, MD (Palmetto Bone and Joint)	N/A	\$ 10,000	\$ -	\$ 10,000	Orthopedic Consultation Services - \$750/clinic
			\$ 1,338,600	\$ -	\$ 1,338,600	<b>Total Consultants Contracts Showed at Maximum level</b>
<b>Early Intervention</b>						
	ABC's of Learning, LLC	202421-3896	\$ 9,300	\$ -	\$ 9,300	
	About Play, LLC	202421-3854	\$ 1,497,300	\$ -	\$ 1,497,300	
	Above and Beyond of Upstate	202421-3878	\$ 62,000	\$ -	\$ 62,000	
	Achieving at Play, LLC	202421-3851	\$ 6,200	\$ -	\$ 6,200	
	Aging with Flair, LLC	202421-3815	\$ 499,100	\$ -	\$ 499,100	
	Ahead Start	202421-3801	\$ 570,400	\$ -	\$ 570,400	
	Aiken	202421-01	\$ 161,200	\$ -	\$ 161,200	
	All About Children, LLC	202421-3858	\$ 322,400	\$ -	\$ 322,400	
	Allendale-Barnwell	202421-02	\$ 62,000	\$ -	\$ 62,000	
	Amazing Kids, LLC	202421-3864	\$ 241,800	\$ -	\$ 241,800	
	Anderson	202421-03	\$ 142,600	\$ -	\$ 142,600	
	Beaufort	202421-06	\$ 148,800	\$ -	\$ 148,800	
	Better Beginnings Early Intervention	202421-3866	\$ 167,400	\$ -	\$ 167,400	
	Beyond Early Intervention, LLC	202421-3852	\$ 241,800	\$ -	\$ 241,800	
	Beyond the Stars Early Intervention, LLC	202421-3898	\$ 43,400	\$ -	\$ 43,400	
	Bloom & Blossom, LLC	202421-3857	\$ 12,400	\$ -	\$ 12,400	
	Bright Start	202421-3802	\$ 1,140,800	\$ -	\$ 1,140,800	
	Brilliant Beginnings, LLC	202421-3803	\$ 62,000	\$ -	\$ 62,000	
	Calhoun	202421-08	\$ 6,200	\$ -	\$ 6,200	
	Carolina Behavior & Beyond, LLC	202421-3828	\$ 713,000	\$ -	\$ 713,000	
	Carolina Early Intervention, LLC	202421-3868	\$ 37,200	\$ -	\$ 37,200	
	Cherokee	202421-11	\$ 43,400	\$ -	\$ 43,400	
	Chesco	202421-13	\$ 62,000	\$ -	\$ 62,000	
	Chester/Lancaster	202421-45	\$ 31,000	\$ -	\$ 31,000	
	Clarendon	202421-14	\$ 43,400	\$ -	\$ 43,400	
	Coastal Early Intervention, LLC	202421-3844	\$ 55,800	\$ -	\$ 55,800	
	Colleton	202421-15	\$ 21,700	\$ -	\$ 21,700	
	Cornerstone Support Services, LLC	202421-3856	\$ 102,300	\$ -	\$ 102,300	
	Darlington	202421-16	\$ 49,600	\$ -	\$ 49,600	
	Dorchester	202421-17	\$ 9,300	\$ -	\$ 9,300	
	Easter Seals Society of SC	202421-3804	\$ 737,800	\$ -	\$ 737,800	
	Engage in Play Early Intervention	202421-3855	\$ 21,700	\$ -	\$ 21,700	
	Epworth Early Intervention Center	202421-3808	\$ 96,100	\$ -	\$ 96,100	
	Exceptional Kids, LLC	202421-3900	\$ 9,300	\$ -	\$ 9,300	
	Family Ties of SC, LLC	202421-3901	\$ 6,200	\$ -	\$ 6,200	
	Great Kids and Awesome Adults	202421-3870	\$ 641,700	\$ -	\$ 641,700	
	Hampton	202421-23	\$ 24,800	\$ -	\$ 24,800	

## DDSN FY24 Contractual Agreements

Type of Contract	Vendor/Provider Name	Contract #	Initial FY24 Amount	Change to Initial FY24 Amount	Current FY24 Contract Amount	Description	
<b>Early Intervention Cont.</b>	Hands on Developmental Services, LLC	202421-3812	\$ 93,000	\$ -	\$ 93,000		
	Horry	202421-24	\$ 93,000	\$ -	\$ 93,000		
	I Shine, LLC	202421-3818	\$ 68,200	\$ -	\$ 68,200		
	Jasper	202421-25	\$ 9,300	\$ -	\$ 9,300		
	Kershaw	202421-26	\$ 9,300	\$ -	\$ 9,300		
	Kid in Development	202421-3809	\$ 198,400	\$ -	\$ 198,400		
	Kids First, LLC	202421-3805	\$ 15,500	\$ -	\$ 15,500		
	Laurens	202421-28	\$ 18,600	\$ -	\$ 18,600		
	Lee	202421-29	\$ 21,700	\$ -	\$ 21,700		
	Lowcountry Early Intervention, LLC	202421-3891	\$ 37,200	\$ -	\$ 37,200		
	Marion-Dillon	202421-30	\$ 65,100	\$ -	\$ 65,100		
	MaxAbilities of York	202421-40	\$ 99,200	\$ -	\$ 99,200		
	Meeting Milestones EI Services	202421-3882	\$ 542,500	\$ -	\$ 542,500		
	Milestones Developmental Services, LLC	202421-3902	\$ 12,400	\$ -	\$ 12,400		
	Newberry	202421-46	\$ 21,700	\$ -	\$ 21,700		
	Oconee	202421-33	\$ 102,300	\$ -	\$ 102,300		
	Orangeburg	202421-34	\$ 40,300	\$ -	\$ 40,300		
	Palmetto Early Intervention	202421-3840	\$ 201,500	\$ -	\$ 201,500		
	Path Finders Team Services	202421-3848	\$ 173,600	\$ -	\$ 173,600		
	Pattison's DREAM Academy	202421-3820	\$ 49,600	\$ -	\$ 49,600		
	Pediatric Therapy of Aiken, LLC	203221-3814	\$ 71,300	\$ -	\$ 71,300		
	Pee Dee Kids, LLC	202421-3850	\$ 31,000	\$ -	\$ 31,000		
	Pee Dee Professional Interv	202421-3872	\$ 133,300	\$ -	\$ 133,300		
	Peek-A-Boo EI	202421-3899	\$ 24,800	\$ -	\$ 24,800		
	Play 2 Learn Early Intervention	202421-3886	\$ 114,700	\$ -	\$ 114,700		
	Playworks, Inc.	202421-3807	\$ 248,000	\$ -	\$ 248,000		
	Promising Futures	202421-3836	\$ 161,200	\$ -	\$ 161,200		
	Ready, Set, Go! Early Intervention, LLC	202421-3894	\$ 96,100	\$ -	\$ 96,100		
	Richland-Lexington	202421-36	\$ 158,100	\$ -	\$ 158,100		
	Right Steps	202421-3883	\$ 15,500	\$ -	\$ 15,500		
	Room to Bloom, LLC	202421-3884	\$ 170,500	\$ -	\$ 170,500		
	Smart Start Early Intervention, LLC	202421-3880	\$ 52,700	\$ -	\$ 52,700		
	Student Solutions	202421-3849	\$ 111,600	\$ -	\$ 111,600		
	Sumter	202421-37	\$ 89,900	\$ -	\$ 89,900		
	Therapy Solutions, LLC	202421-3806	\$ 62,000	\$ -	\$ 62,000		
	Thrive Upstate	202421-22	\$ 120,900	\$ -	\$ 120,900		
	Tina Greene & Associates	202421-3822	\$ 31,000	\$ -	\$ 31,000		
	Tiny Feet Early Intervention	202421-3874	\$ 341,000	\$ -	\$ 341,000		
	Union	202421-38	\$ 31,000	\$ -	\$ 31,000		
				<b>\$ 12,040,400</b>	<b>\$ -</b>	<b>\$ 12,040,400</b>	<b>Total Early Intervention</b> (Note: The amount of each contract was based on a \$24.65 estimated per 15 minute unit)
	<b>Child Day</b>	Anderson	202424-03	\$ 192,016	\$ -	\$ 192,016	Child Day Care Services
		Charleston	202424-10	\$ 100,000	\$ -	\$ 100,000	Child Day Care Services
				<b>\$ 292,016</b>	<b>\$ -</b>	<b>\$ 292,016</b>	<b>Total Child Day</b>
	<b>ICF</b>	Charleston	202401-10	\$ 969,000	\$ -	\$ 969,000	Intermediate Care Facilities for Individuals with Intellectual Disabilities
		Lee	202401-29	\$ 1,900,000	\$ -	\$ 1,900,000	
		Calhoun	202401-08	\$ 3,900,000	\$ -	\$ 3,900,000	
		Laurens	202401-28	\$ 1,900,000	\$ -	\$ 1,900,000	
		Burton Center	202401-18	\$ 6,000,000	\$ -	\$ 6,000,000	
		Tri-Development	202401-48	\$ 3,800,000	\$ -	\$ 3,800,000	
		Berkeley Citizens	202401-07	\$ 1,900,000	\$ -	\$ 1,900,000	
Chester/Lancaster		202401-45	\$ 2,000,000	\$ -	\$ 2,000,000		
Union		202401-38	\$ 1,000,000	\$ -	\$ 1,000,000		
Darlington		202401-16	\$ 2,100,000	\$ -	\$ 2,100,000		
Dorchester		202401-17	\$ 1,900,000	\$ -	\$ 1,900,000		
Orangeburg		202401-34	\$ 3,800,000	\$ -	\$ 3,800,000		
Florence		202401-20	\$ 4,800,000	\$ -	\$ 4,800,000		
Allendale		202401-02	\$ 2,900,000	\$ -	\$ 2,900,000		
Newberry		202401-46	\$ 1,200,000	\$ -	\$ 1,200,000		
Cherokee		202401-11	\$ 2,000,000	\$ -	\$ 2,000,000		
Babcock Center		202401-04	\$ 4,800,000	\$ -	\$ 4,800,000		
Thrive Upstate		202401-22	\$ 5,700,000	\$ -	\$ 5,700,000		
Sumter		202401-37	\$ 3,100,000	\$ -	\$ 3,100,000		
				<b>\$ 55,669,000</b>	<b>\$ -</b>	<b>\$ 55,669,000</b>	

## DDSN FY24 Contractual Agreements

Type of Contract	Vendor/Provider Name	Contract #	Initial FY24 Amount	Change to Initial FY24 Amount	Current FY24 Contract Amount	Description	
<b>Family Support Respite</b>	Charleston	202429-10	\$ 65,881	\$ -	\$ 65,881		
	Calhoun	202429-08	\$ 7,475	\$ -	\$ 7,475		
	Laurens	202429-28	\$ 22,426	\$ -	\$ 22,426		
	Clarendon	202429-14	\$ 6,578	\$ -	\$ 6,578		
	CHESCO Services	202429-13	\$ 13,057	\$ -	\$ 13,057		
	Anderson	202429-03	\$ 28,605	\$ 21,395	\$ 50,000		
	Chester/Lancaster	202429-45	\$ 18,140	\$ -	\$ 18,140		
	Horry	202429-24	\$ 52,725	\$ -	\$ 52,725		
	Richland-Lexington	202429-36	\$ 115,218	\$ -	\$ 115,218		
	Georgetown	202429-21	\$ 11,960	\$ -	\$ 11,960		
	Bamberg	202429-05	\$ 8,572	\$ -	\$ 8,572		
	Marlboro	202429-31	\$ 7,276	\$ -	\$ 7,276		
	Darlington	202429-16	\$ 20,233	\$ -	\$ 20,233		
	Marion-Dillon	202429-30	\$ 15,947	\$ -	\$ 15,947		
	Dorchester	202429-17	\$ 47,044	\$ -	\$ 47,044		
	Orangeburg	202429-34	\$ 42,260	\$ -	\$ 42,260		
	Aiken	202429-01	\$ 35,183	\$ -	\$ 35,183		
	Florence	202429-20	\$ 46,346	\$ -	\$ 46,346		
	Allendale-Barnwell	202429-02	\$ 2,193	\$ -	\$ 2,193		
	Charles Lea	202429-09	\$ 71,862	\$ -	\$ 71,862		
	Kershaw	202429-26	\$ 9,768	\$ -	\$ 9,768		
	Newberry	202429-46	\$ 6,877	\$ -	\$ 6,877		
	Center for Developmental Services	202429-153	\$ 27,608	\$ -	\$ 27,608		
	Cherokee	202429-11	\$ 15,349	\$ -	\$ 15,349		
	SC Autism Society	202429-147	\$ 181,498	\$ -	\$ 181,498		
	Bright Start	202429-146	\$ 276,183	\$ -	\$ 276,183		
	Thrive Upstate	20242-51	\$ 5,980	\$ -	\$ 5,980		
	Arc of South Carolina	202429-148	\$ 98,473	\$ -	\$ 98,473		
	Beaufort	202429-06	\$ 25,316	\$ -	\$ 25,316		
	Path Finders Team Services	202429-50	\$ 7,974	\$ -	\$ 7,974		
	MaxAbilities of York	202429-40	\$ 39,070	\$ -	\$ 39,070		
	Sumter	202429-37	\$ 23,123	\$ -	\$ 23,123		
	Central Office Care Coordination	N/A	\$ 691,800	\$ -	\$ 691,800		
			\$ 2,048,000	\$ 21,395	\$ 2,069,395	<b>Total Family Support Respite</b>	
	<b>Special Contracts</b>	Babcock	2024-09	\$ 56,000	\$ -	\$ 56,000	Facility Cost to Operate HASCI Transitional Program
		Babcock	2024-171	\$ 1,700	\$ -	\$ 1,700	Think First Midlands
		Brain Injury Association of South Carolina	2024-68	\$ 65,000	\$ -	\$ 65,000	Family Support Network
		Charleston	2024-10	\$ 56,000	\$ 56,000	\$ 112,000	Facility Cost to Operate HASCI Transitional Program
		Family Connection of South Carolina	2024-26	\$ 65,000	\$ -	\$ 65,000	Family Support Network
		Horry	2024-124	\$ 56,000	\$ -	\$ 56,000	Facility Cost to Operate HASCI Transitional Program
Palmetto Health University Group		2024-33	\$ 111,332	\$ -	\$ 111,332	Physician Services (Dr. Welsh) (Inactive since 2019?)	
Prisma Health - Midlands		2024-174	\$ 1,700	\$ -	\$ 1,700	Think First Midlands	
Devereaux Advanced Behavioral Health		N/A	\$ 527,308	\$ -	\$ 527,308	Emergency Placement G.M	
SC Respite Coalition		2024-83	\$ 257,000	\$ -	\$ 257,000	Respite Training	
SC Spinal Cord Injury		2024-126	\$ 65,000	\$ -	\$ 65,000	Family Support Network	
SC Spinal Cord Injury		2024-175	\$ 1,700	\$ -	\$ 1,700	Think First Midlands	
Special Olympics		2024-29	\$ 250,000	\$ -	\$ 250,000	Unified Sports Program	
Tallon Group		N/A	\$ 135,000	\$ -	\$ 135,000	\$1,250 per day max	
Thrive Upstate		2024-50	\$ 56,000	\$ -	\$ 56,000	Facility Cost to Operate HASCI Transitional Program	
OmniCare - Midlands Pharmacy Services		N/A	\$ 85,000	\$ -	\$ 85,000	Midlands Pharmacy Services	
OmniCare - Whitten Pharmacy Services		N/A	\$ 77,000	\$ -	\$ 77,000	Whitten Pharmacy Services	
USC - Center for Applied Research & Arnold School of Public Health	N/A	\$ 99,938	\$ -	\$ 99,938	Needs Assessment and Facilitation to Update the SC TBI State Plan.		
USC - Center for Disabilities Resources (CDR)	2024-3042	\$ 605,097	\$ -	\$ 605,097	Training Programs and Technical Assistance for Staff		
USC - Training Programs for Attendant Care	2024-3043	\$ 200,000	\$ -	\$ 200,000	Training Programs for Attendant Care		
		\$ 2,771,775	\$ 56,000	\$ 2,827,775	<b>Total Special</b>		
<b>Post-Acute Rehabilitation Project</b>	Prisma Health - Upstate		\$ 1,700,000	\$ -	\$ 1,700,000		
	Carolina Rehabilitation	N/A	\$ 400,000	\$ -	\$ 400,000	Providers are CARF accredited inpatient/outpatient TBI/SCI Rehabilitation Programs approved by SFAA State Procurement Office to participate in RFP Solicitation: 5400020743	
	Rehab Without Walls		\$ 501,000	\$ -	\$ 501,000		
	Roper Hospital		\$ 1,700,000	\$ -	\$ 1,700,000		
		\$ 4,301,000	\$ -	\$ 4,301,000	<b>Total PARI Program</b>		



## DDSN FY24 Contractual Agreements

Type of Contract	Vendor/Provider Name	Contract #	Initial FY24 Amount	Change to Initial FY24 Amount	Current FY24 Contract Amount	Description
<b>Alternative Placement Residential Services</b>	Avalonia		\$ 365,000	\$ -	\$ 365,000	Medical Rehabilitative Behavioral Services
	Broadstep Kingstree		\$ 547,500	\$ -	\$ 547,500	Providers are approved by SFAA State Procurement Office to participate in RFP Solicitation:
	Broadstep Excalibur		\$ 990,700	\$ -	\$ 990,700	5400020443
	Broadstep Georgetown		\$ 141,150	\$ -	\$ 141,150	
<b>Alternative Placement Residential Services Cont.</b>	Coastal Autism Academy/ SeaCoast OPCO LLC		\$ 564,580	\$ -	\$ 564,580	
	Purpose/Broadstep LLC		\$ 856,000	\$ -	\$ 856,000	
	Prisma Health					
	Wise Care		\$ 70,570	\$ -	\$ 70,570	
	Wellpath/Correct Care of SC		\$ 3,380,000	\$ -	\$ 3,380,000	
	Department of Social Services	Cost Share	\$ 842,000	\$ -	\$ 842,000	
	Department of Mental Health	Cost Share	\$ 242,500	\$ -	\$ 242,500	Just Care
			<b>\$ 8,000,000</b>	<b>\$ -</b>	<b>\$ 8,000,000</b>	<b>Total Alternative Placement Residential Services</b>
			<b>\$ 86,460,791</b>	<b>\$ 77,395</b>	<b>\$ 86,538,186</b>	<b>Grand Total of FY24 Contracts</b>

**Constance Holloway**  
*Interim State Director/General Counsel*  
**Janet Brock Priest**  
*Associate State Director*  
*Operations*  
**Lori Manos**  
*Associate State Director*  
*Policy*  
**Harley T. Davis, Ph.D.**  
*Chief Administrative Officer*  
**Quincy Swygert**  
*Chief Financial Officer*  
**Greg Meetze**  
*Chief Information Officer*



**South Carolina  
 Department of Disabilities  
 and Special Needs**

3440 Harden Street Extension  
 Columbia, South Carolina 29203  
**(803) 898-9600**  
**Toll Free: 888/DSN-INFO**  
**Home Page: ddsn.sc.gov**

**COMMISSION**  
**Eddie L. Miller**  
*Chairman*  
**Michelle Woodhead**  
*Vice Chairman*  
**Gary Kocher, M.D.**  
*Secretary*  
**Barry D. Malphrus**  
**David L. Thomas**

Reference Number: 413-12-DD

Title of Document: Employee Personal Property Damage Reimbursement

Date of Issue: August 17, 2023

Date of Last Revision: August 17, 2023 (NEW)

Effective Date: August 17, 2023

Applicability: All DDSN State Employees

**THE LANGUAGE USED IN THIS DOCUMENT DOES NOT CREATE AN EMPLOYMENT CONTRACT BETWEEN THE EMPLOYEE AND THE SC DEPARTMENT OF DISABILITIES AND SPECIAL NEEDS (DDSN). THIS DOCUMENT DOES NOT CREATE ANY CONTRACTUAL RIGHTS OR ENTITLEMENTS. DDSN RESERVES THE RIGHT TO REVISE THE CONTENT OF THIS DOCUMENT, IN WHOLE OR IN PART. NO PROMISES OR ASSURANCES, WHETHER WRITTEN OR ORAL, WHICH ARE CONTRARY TO OR INCONSISTENT WITH THE TERMS OF THIS PARAGRAPH CREATE ANY CONTRACT OF EMPLOYMENT.**

**PURPOSE**

A provision in the State Appropriations Act authorizes The South Carolina Department of Disabilities and Special Needs (DDSN) to replace personal property of an employee that has been damaged or destroyed by a person receiving services through DDSN. The replacement of personal property may be made if the loss has resulted from actions by the employee deemed to be appropriate and in the line of duty; and if the damaged or destroyed item is found to be reasonable in value and necessary for the employee to carry out the functions and duties of their employment.

**POLICY**

Reimbursement for replacement of damaged or destroyed items shall not exceed the limits per item as listed below, per incident. The State Director or designee shall determine whether a claim under this provision meets the necessary requirements. Nothing in the above-mentioned provision creates an entitlement in favor of the claimant. Reimbursement by DDSN is an effort to maintain employee

morale without an admission of liability. Pursuant to the statutory provision, DDSN has developed the following guidelines for reimbursement of employee claims.

**GUIDELINES FOR REIMBURSEMENT**

The following requirements must be met, prior to reimbursement:

- The property loss suffered by the employee must be found to have been caused by an act of a person within DDSN’s care;
- The employee must be acting within the scope of his/her duties; and
- The affected item of personal property must be reasonable in value and necessary for the employee to carry out the functions and duties of his/her employment.

**REIMBURSEMENT LIMITS**

Reimbursement for loss under this policy shall not exceed the cost per item, per incident as listed. These amounts shall be considered as maximum reimbursement for a particular item. Generally, a reimbursable claim is limited to the cost, cost of repair, or replacement cost whichever is less. Claims for loss which coincide with an injury to the employee may be covered under workers’ compensation provisions. All claims approved for reimbursement will be paid out of the designated budget where the employee claiming the loss is employed.

Personal property reimbursement schedule is as follows:

<b>ITEM</b>	<b>MAXIMUM ALLOWANCE</b>
wear (Glasses)*	0
wear (Glasses-Lens)	0
wear (Contact-Lenses)	/lenses
thing	/item
elery	
tch repair	

**VEHICLE CLAIMS**

DDSN will reimburse employees for loss or damage to their vehicle while located or parked at a departmental facility. Any claims over \$250.00 must be filed through the Insurance Reserve Fund under DDSN’s General Liability Tort Coverage. A claim for reimbursement may be initiated by the employee by filing an incident report. The Regional Center Facility Administrator will then ensure the paperwork is sent to the Central Office Legal Division for processing. South Carolina law requires driver’s secure personal insurance for vehicle damage.

**CLAIM PROCEDURE**

A claim for reimbursement in accordance with the provisions of this directive may be initiated by filing an incident report. This report shall include, at a minimum, the following information:

- A full explanation of the incident, time and place, which caused the loss or damage to personal property;
- The name of the residents involved;

- The name of any witnesses; and
- A description of the damaged or destroyed personal property, to include pictures, receipt for replacement item or two (2) estimates of the cost of replacement or repair, as appropriate. The damaged item must be made available for evaluation.

Claims should be submitted as soon as possible after the incident. Late claims may jeopardize the investigation of the claim and reimbursement. Submission of false claims may subject the employee to disciplinary action.

### **Regional Centers**

The Consumer Supports Division shall immediately forward the claim to the DDSN Regional Center Facility Administrator for review and approval. Upon approval, the Facility Administrator shall submit the request to their local Finance Department for processing.

### **Central Office and Autism**

On behalf of the employee, an Executive Management staff member shall immediately forward the claim to the Central Office Finance Department for approval and processing.

### **PAYMENT**

A claim report, the DDSN Regional Center Facility Administrator's or Executive Management's approval, and the designated Finance Department's decision shall constitute the supporting documentation for the financial transaction and will procure a check for the approved amount.

### **LIABILITY**

This procedure may be changed, modified, or terminated at any time by DDSN. No rights to claimants or their successors will accrue pursuant to this provision; nor will any action taken under this provision be subject to appeal. This procedure does not in any way affect an employee's right to file a claim against DDSN or the State pursuant to the State Tort Claims Act. The sole purpose of this provision is to gratuitously address employee property damage in a fair and consistent manner.

---

Eddie L. Miller, Chairman

---

Michelle Woodhead, Vice-Chairman

**THE LANGUAGE USED IN THIS DOCUMENT DOES NOT CREATE AN EMPLOYMENT CONTRACT BETWEEN THE EMPLOYEE AND THE SC DEPARTMENT OF DISABILITIES AND SPECIAL NEEDS (DDSN). THIS DOCUMENT DOES NOT CREATE ANY CONTRACTUAL RIGHTS OR ENTITLEMENTS. DDSN RESERVES THE RIGHT TO REVISE THE CONTENT OF THIS DOCUMENT, IN WHOLE OR IN PART. NO PROMISES OR ASSURANCES, WHETHER WRITTEN OR ORAL, WHICH ARE CONTRARY TO OR INCONSISTENT WITH THE TERMS OF THIS PARAGRAPH CREATE ANY CONTRACT OF EMPLOYMENT.**

*To access the following attachments, please see the agency website page "Current Directives" at: <https://ddsn.sc.gov/providers/ddsn-directives-standards-and-manuals/current-directives>*

Attachment          Employee Personal Property Damage Report

**SOUTH CAROLINA DEPARTMENT  
OF DISABILITIES AND SPECIAL NEEDS**

**EMPLOYEE PERSONAL PROPERTY DAMAGE REPORT**

FROM (*Facility Administrator*): \_\_\_\_\_ Date: \_\_\_\_\_

Name: \_\_\_\_\_ Title: \_\_\_\_\_ Shift: \_\_\_\_\_ Work Area: \_\_\_\_\_

Address (*include zip code*): \_\_\_\_\_

Date and Time of Incident: \_\_\_\_\_

Fully Describe (*Include location, individuals and staff involved, individual's behavior, staff response, etc.*)

List Personal Items Damaged and Value of Each:

---

---

I witnessed the above incident and can verify the claim of damage to staff personal property.

Print Name of Witness: \_\_\_\_\_

\_\_\_\_\_  
Signature of Witness

---

---

AOD Statement (*Include date and time reported*):

\_\_\_\_\_  
Administrative Officer of the Day (AOD) Signature

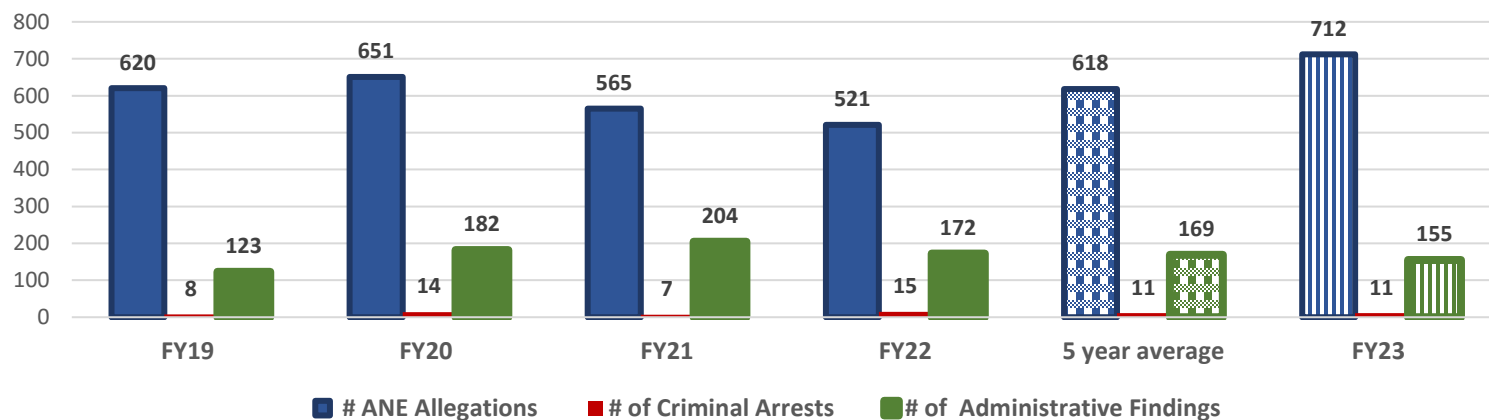
\_\_\_\_\_  
Regional Center Facility Administrator Signature

# SCDDSN Incident Management Report 5-year trend data

for Community-Based Services (Includes Residential & Day Service Settings) Thru 6/30/2023

Allegations of Abuse, Neglect, Exploitation	FY19	FY20	FY21	FY22	5 YEAR Average	FY23
# of Individual ANE Allegations	620	651	565	543	<b>618</b>	712
# of ANE Incident Reports (One report may involve multiple allegations)	415	436	388	389	<b>425</b>	499
Rate per 100	9.6	11.8	10.9	9.3	<b>10.4</b>	12.1
# ANE Allegations resulting in Criminal Arrest	8	14	7	15	<b>11</b>	11
# ANE Allegations with Administrative Findings from DSS or State Long-Term Care Ombudsman	123	182	204	172	<b>167</b>	155

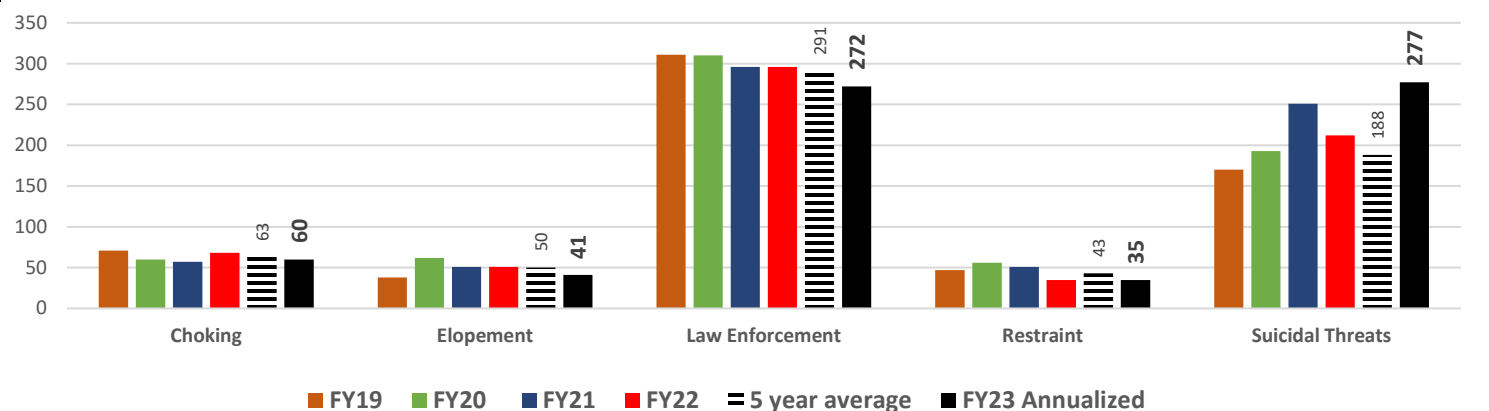
## ANE Allegations: Comparison to Arrest Data & Administrative Findings



There were 2 ANE Reports for FY23 involving children under the age of 18. All other reports were for adults.

Critical Incident Reporting	FY19	FY20	FY21	FY22	5 YEAR Average	FY23
# Critical Incidents	916	982	974	1245	<b>1046</b>	1116
Rate per 100	9.6	11.8	10.9	15.4	<b>12.2</b>	13.2
# Choking Events	71	65	57	68	<b>64</b>	60
# Law Enforcement Calls	311	310	296	296	<b>297</b>	272
# Suicidal Threats	170	193	251	212	<b>221</b>	277
# Emergency Restraints or Restraints w/ Injury	47	56	51	35	<b>45</b>	35

## 5 Year Critical Incident Trend Report- Community Settings



There was 1 Critical Incident Report for FY23 involving a child under the age of 18. All other reports were for adults.

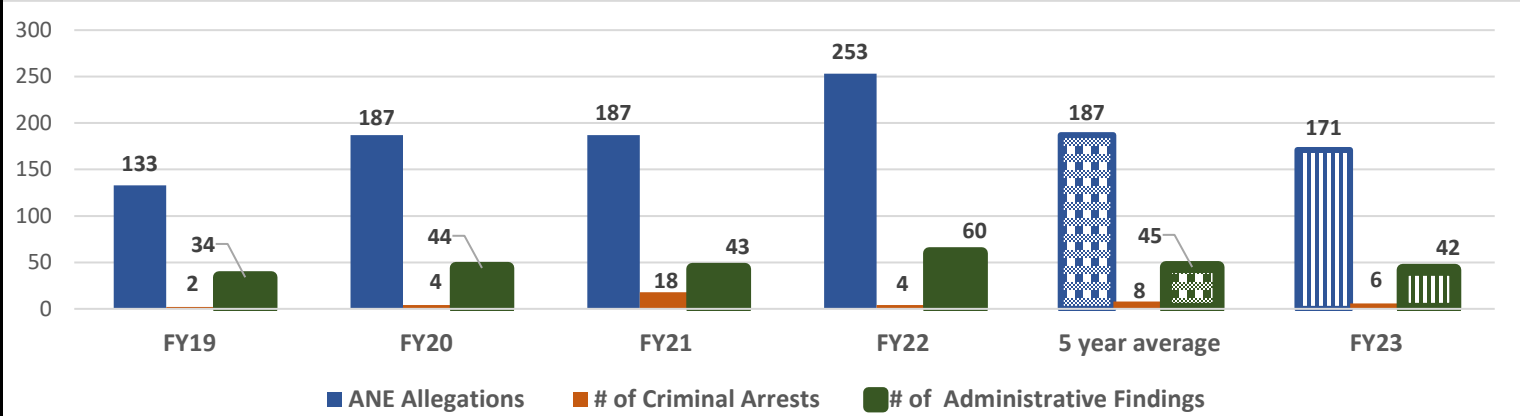
Death Reporting	FY19	FY20	FY21	FY22	5 YEAR Average	FY23
# of Deaths Reported- Community Settings	78	86	130	102	<b>98</b>	95
Rate per 100	1.6	1.9	2.8	2.2	<b>2.0</b>	2.0

# SCDDSN Incident Management Report 5-year trend data

for Regional Centers Thru 6/30/2023

Allegations of Abuse, Neglect, & Exploitation	FY19	FY20	FY21	FY22	5 YEAR Average	FY23
# of Individual ANE Allegations	139	187	187	253	187	171
# of ANE Incident Reports (One report may involve multiple allegations)	102	136	138	167	136	138
Rate per 100	20.9	28.9	27.9	38.0	29.5	31.7
# ANE Allegations resulting in Criminal Arrest	2	5	19	4	8	6
# ANE Allegations with Administrative Findings from DSS or State Long-Term Care Ombudsman	34	44	43	60	45	42

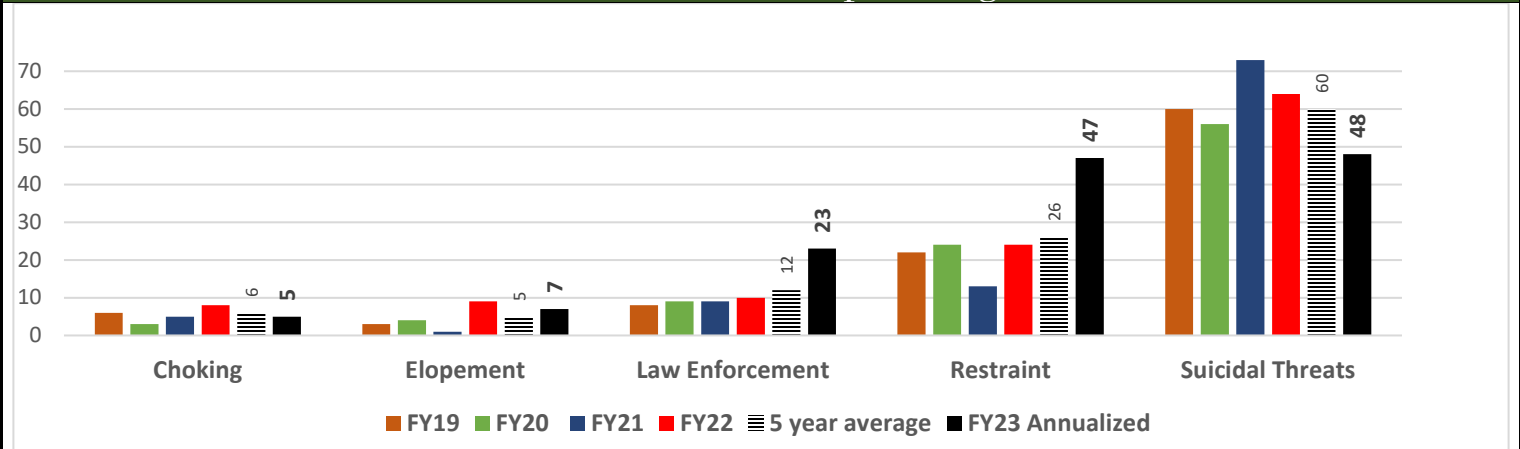
## ANE Allegations: Comparison to Arrest Data & Administrative Findings



There were 0 ANE Reports for FY23 involving children under the age of 18. All reports were for adults.

Critical Incident Reporting	FY19	FY20	FY21	FY22	5 YEAR Average	FY23
# Critical Incidents	132	135	124	160	145	171
Rate per 100	18.6	20.8	19.1	24.2	21.5	24.8
# Choking Events	6	3	5	8	6	5
# Law Enforcement Calls	8	9	9	10	12	23
# Suicidal Threats	60	56	73	64	60	48
# Emergency Restraints or Restraints w/ Injury	22	24	13	24	26	47

## 5 Year Critical Incident Trend Report- Regional Centers



There were 0 Critical Incident Reports for FY23 involving children under the age of 18. All reports were for adults.

Death Reporting	FY19	FY20	FY21	FY22	5 YEAR Average	FY23
# of Deaths Reported - Regional Centers	33	22	48	36	32	21
Rate per 100	4.6	3.4	7.0	5.4	4.8	4.0

FY24 SPENDING PLAN BUDGET - PROPOSED		\$ 327,752,128
YTD EXPENDITURES BY CATEGORY		EXPENDITURES THRU 7/31/2023
501000 - PERSONAL SERVICES - PAYROLL		\$ 5,999,180
502000 - CONTRACTUAL SERVICES		\$ 6,566,721
503000 - SUPPLIES AND MATERIALS		\$ 158,305
504000 - FIXED CHARGES AND CONTRIBUTIONS (RENT/LEASE)		\$ 28,125
505000 - TRAVEL		\$ 23,525
506000 - FIXED ASSETS (CAPITALIZED)		\$ 34,439
507000 - LAND & BUILDINGS		\$ -
511000 - PUBLIC ASSISTANCE		\$ 16,282
513000 - EMPLOYER CONTRIBUTIONS - FRINGE BENEFITS		\$ 3,228,890
515000 - UTILITIES		\$ 67,174
517000 - ALLOCATIONS		\$ -
518000 - AID TO SUBDIVISIONS (STATE AID)		\$ -
520000 - FIXED ASSETS(NON-CAPITALIZED)		\$ -
<b>TOTAL YTD EXPENDITURES</b>		<b>\$ 16,122,642</b>
<b>% OF YTD EXPENDITURES</b>		<b>4.92%</b>
<b>% OF SPENDING PLAN REMAINING</b>		<b>95.08%</b>
<b>% OF FY REMAINING</b>		<b>91.67%</b>
<b>% DIFFERENCE - OVER (UNDER) BUDGETED EXPENDITURES</b>		<b>-3.41%</b>
<b>ITEMS NOT IN SPENDING PLAN (WILL NOT RECEIVE FUNDING UNTIL 9/30/2023)</b>		
561000 - SPECIAL OPERATIONS (LEGISLATIVE PASS THRU)		\$ -



**Monthly Commission Meeting  
Update for Commissioners  
Constance Holloway**

- Good morning, everyone. Thank you for giving me a few moments to talk about the exciting things we've been doing.
- This month, Midlands Center has a couple of staffers they would like to shoutout for our employee spotlight.
- Evelyn Watts is a Food Service Specialist III and has been with Midlands Center for 40 years. She is one of the most dedicated staffers and goes above and beyond to ensure that the units receive their required daily meals, supplements, weekly deliveries. She shows great confidence and knowledge of the Food Service Department and is highly passionate, hardworking, and humble!
- JaHoward Williams, is a DSP II in the Juniper unit and has been with Midlands Center for more than four years. He is also very dedicated and dependable. He allows consumers to be independent by offering them choices for activities and helping them realize the freedom and opportunities they have. During the exit conference for a recent Recertification survey, the team leader for the survey praised JaHoward for his positive consumer interactions.
- We appreciate both of these staffers for their dedication to consumers at Midlands.
- Next, I'd like to cover some agency updates, as well as some of the fun and exciting things we've been doing.
- Our Employment Services team has hired three new Post-Secondary Transition Coordinators to serve the state. They collaborate with other state agencies to assist students with achieving their goals by facilitating seamless transitions, for eligible students from high school to adult life, by providing the necessary information, referrals and support to promote positive post high school outcomes.

- Additionally, we are continuing to see updates in projects across our regional centers. At Coastal, we are completing a \$31,000 project to replace the floor in the autism facility, as well as a \$42,000 floor replacement in the B2 administration building
- At Midlands, projects include a \$78,000 dental clinic repair, as well as a \$31,000 mesquite ceiling repair and replacement. And at Pee Dee, we have a \$21,000 project to update the front security gate.
- Lastly, at Whitten, we have an \$87,000 project to renovate bathrooms, a \$92,000 roof replacement project and we're replacing lighting in building 205 at a cost of \$35,000
- Our Autism Division has continued training law enforcement, including a recent training with Rock Hill Police Department. Director Stephanie Turner also collaborated with Becky Peters from Employment Services on attending a back-to-school event hosted Lexington 2 and passed out helpful information on our services those who attended.
- In other news, DDSN staff will be completing our agency accountability report for the SC legislature within the next month. Last year, DDSN staff spent a lot of time refining measures to report on for FY2023, so we expect the process to be smooth and to shine a positive light on the agency's progress over the last year.
- I'd also like to quickly mention next month's golf tournament, which is put on by the Parents & Guardians Association of the Coastal Center. The center is fortunate to have a great parent's group and this annual tournament is their being fundraiser, with all proceeds going to benefit our consumers.
- The tournament is Saturday, Sept. 9 and we have been promoting it in the Charleston area, as well as on DDSN's social media channels.

- Lastly, I'd like to note that we will be hosting four meet-and-greets with our DSN Boards this fall at our Regional Centers. The goal of these meetings is to increase communication so we're better able to understand and assist with their needs.
- The first of these four meetings is scheduled for next month at Whitten Center. We look forward to hearing from all our boards.
- This is all I have for now, but I am happy to answer any questions. Thank you!